

## A Qualitative Results



Figure 4: NYUv2 40-Class segmentation. From top-left: input image, ground truth, segmentation, aleatoric and epistemic uncertainty.

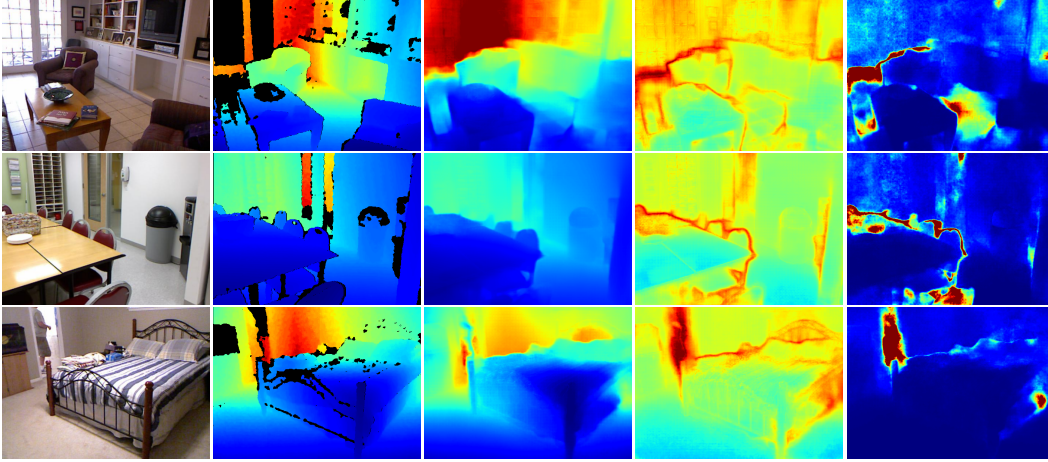


Figure 5: NYUv2 Depth results. From left: input image, ground truth, depth regression, aleatoric uncertainty, and epistemic uncertainty.

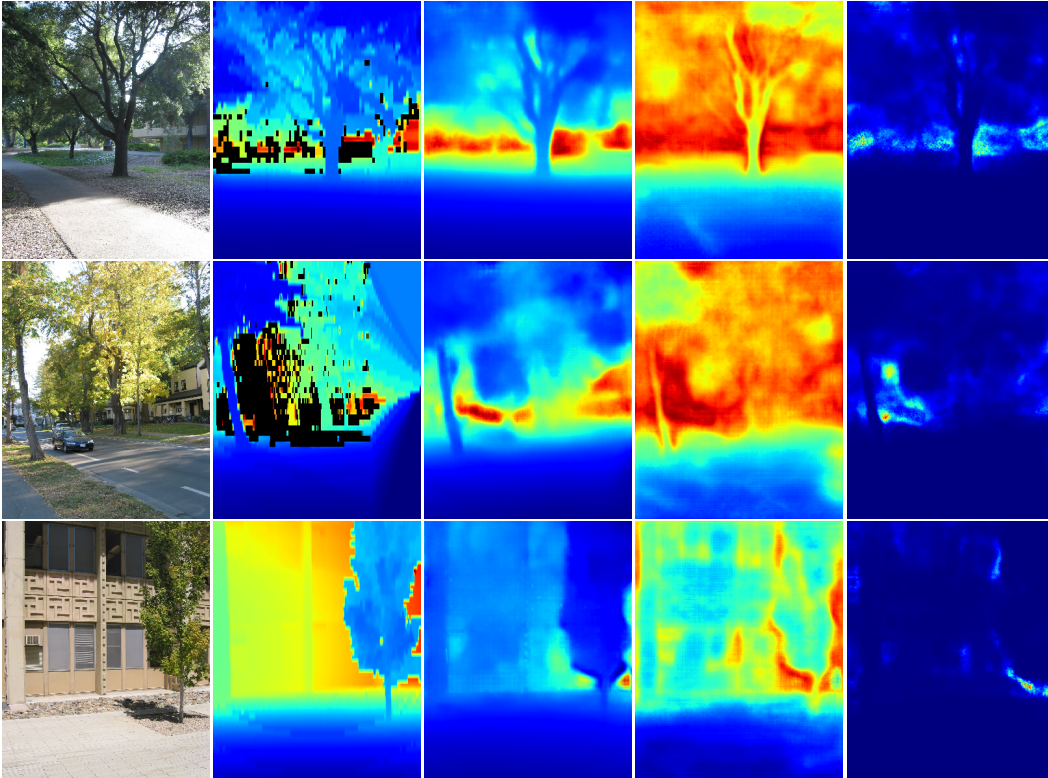


Figure 6: Qualitative results on the Make3D depth regression dataset. Left to right: input image, ground truth, depth prediction, aleatoric uncertainty, epistemic uncertainty.